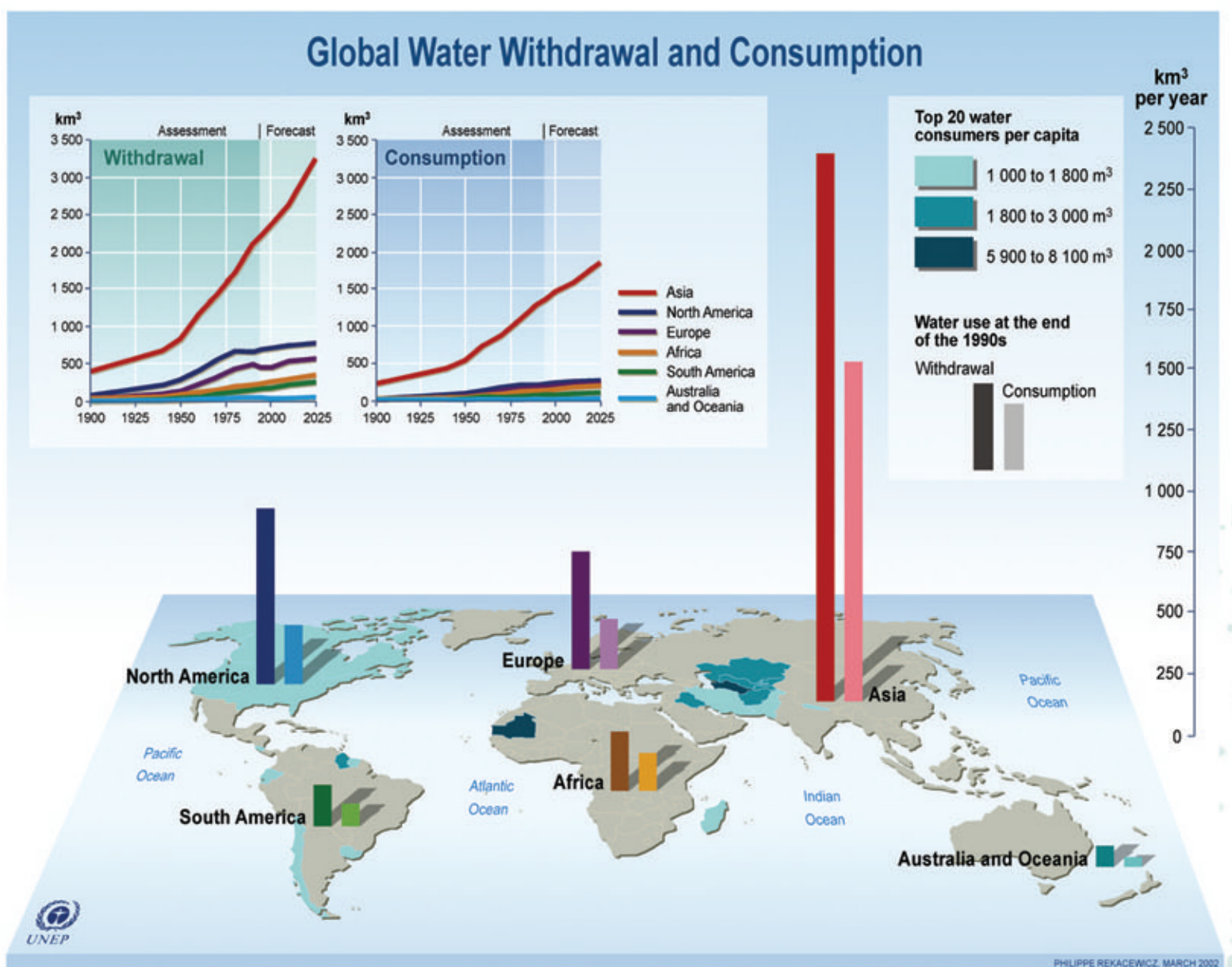


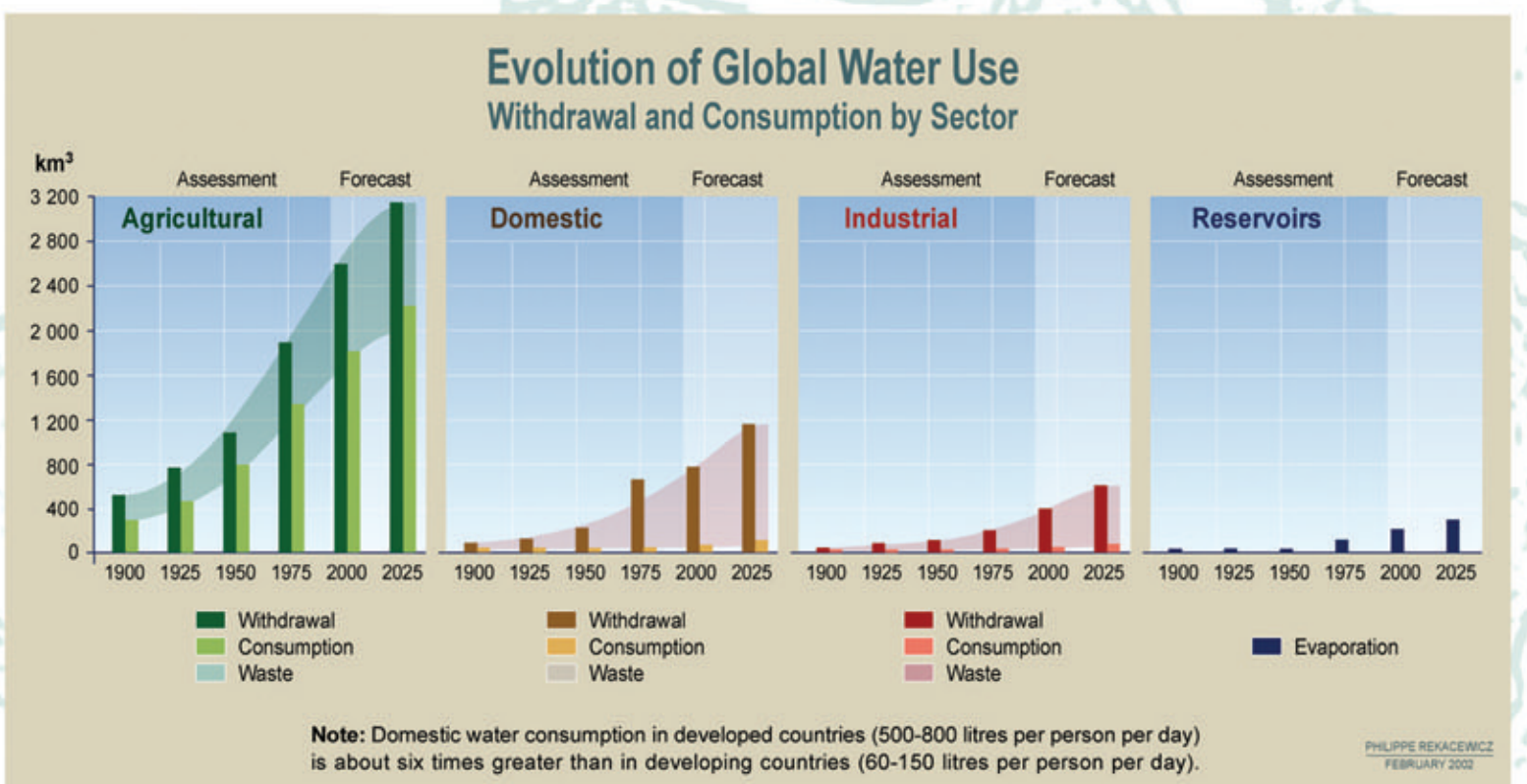
# Unsustainable

By 2025, agriculture is expected to increase its water requirements by 1.2 times, industry by 1.5 times, and domestic consumption by 1.8 times.

Global water withdrawal is expected to grow by about 10-12% every 10 years, an increase of 1.38 times since 1995.



Source: UNEP (2002) Vital Water Graphics - An Overview of the State of the World's Fresh and Marine Waters



**Note:** Domestic water consumption in developed countries (500-800 litres per person per day) is about six times greater than in developing countries (60-150 litres per person per day).

PHILIPPE REKACEWICZ  
FEBRUARY 2002

Source: UNEP (2002) Vital Water Graphics - An Overview of the State of the World's Fresh and Marine Waters